



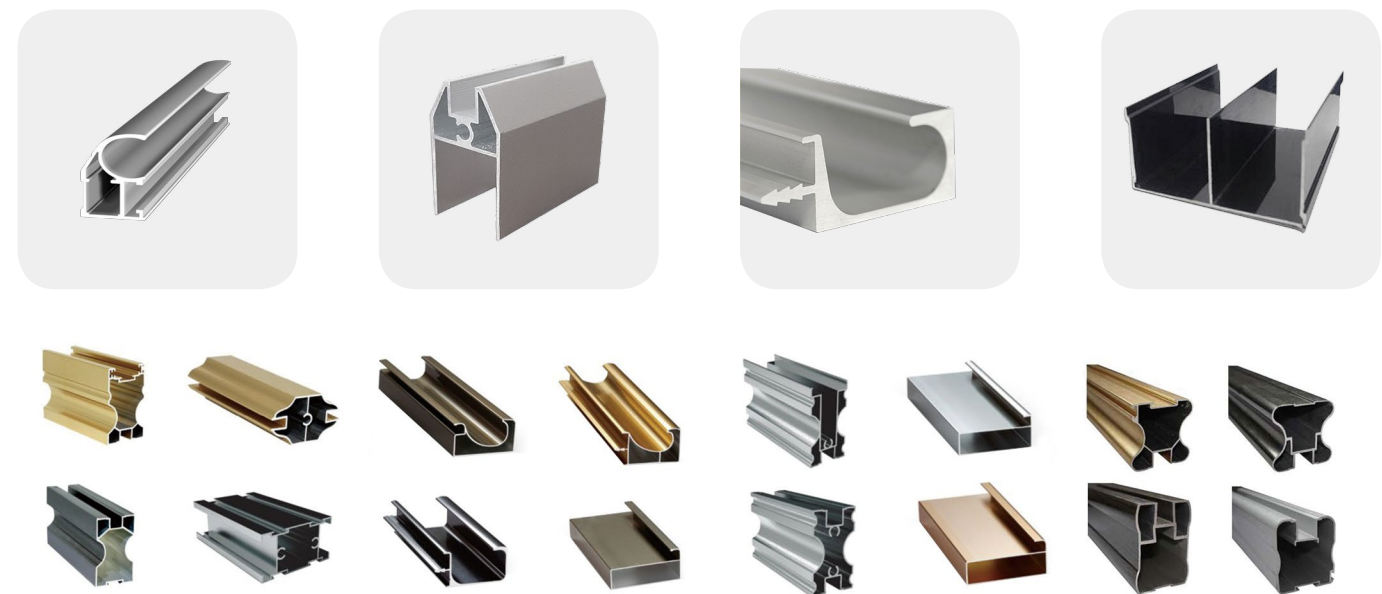
Aluminum Profile for Wardrobe & Cabinet

- A. Alloy: 6063/6061/6005/6060 T5/T6 are available.
- B. Finish: Anodizing, powder coating, wood clour(timber turning), polishing, brushed, mill finish available.
- C. Procedure: Billet casting,extruding, anodizing,powder coating.
- D. Delivery time: 3weeks.
- E. MOQ: 2tons.



Advantages

- (1). Long lasting surface treatment.
- (2). Precious sepcification according to AAMA,DIN standard.
- (3). Anodizing and powder coating length up to 7ms.
- (4). Extruding dimension can be up to 400mm.
- (5). Several packing options suitable for ocean freight and loading,unloading.
- (6). Short lead time to 14 days.



SY-SH-SM1013-09V2 T=0.9mm 0.465kg/m		SY-SH-SM1021 T=1.8mm 0.319kg/m		SY-SH-SM1015 0.505kg/m	
SY-SH-SM1013V2 T=1.3mm 0.657kg/m		SY-SH-SM1022 T=3mm 0.615kg/m		SY-SH-SM1016 0.454kg/m	
SY-SH-SM1015 T=1.2mm 0.505kg/m		SY-SH-SM1023 T=2mm 0.351kg/m		SY-SH-SM1017 0.497kg/m	
SY-SH-SM1016 T=1.2mm 0.454kg/m		SY-SH-SM1024 T=1.2mm 0.284kg/m		SY-SH-SM1018 0.567kg/m	
SY-SH-SM1017 T=2mm 0.497kg/m		SY-SH-SM1025 T=1.2mm 0.604kg/m		SY-SH-SM1019 0.349kg/m	
SY-SH-SM1018 T=2mm 0.567kg/m		SY-SH-SM1026 T=3mm 0.443kg/m		SY-SH-SM1020 0.494kg/m	
SY-SH-SM1019 T=2mm 0.349kg/m		SY-SH-SM1037 T=1mm 0.275kg/m		SY-SH-SM1021 0.319kg/m	
SY-SH-SM1023 0.351kg/m		SY-SH-SM1038 T=1mm 0.268kg/m		SY-SH-SM1022 0.615kg/m	
SY-SH-SM1024 0.284kg/m		SY-SH-SM1039 T=1mm 0.370kg/m		SY-SH-SM1042 T=1mm 0.098kg/m	
SY-SH-SM1025 0.604kg/m		SY-SH-SM1040 T=0.9mm 0.324kg/m		SY-SH-SM1043 T=1mm 0.097kg/m	
SY-SH-SM1026 0.443kg/m		SY-SH-SM1041 T=1.5mm 0.458kg/m		SY-SH-SM1017 T=2mm 0.497kg/m	